

CAMMACK BUILDING

3 POST OFFICE RD. WALDORF, MD



OFFICE SPACE FOR LEASE

- Unit 103 - 2,264 sf of office space
- Unit 102 - 1,200 sf of office space
- 3 to 5 year term preferred
- Immediate Availability
- Tenant pays own utilities
- Excellent visibility
- All Offers are Subject to Credit Report



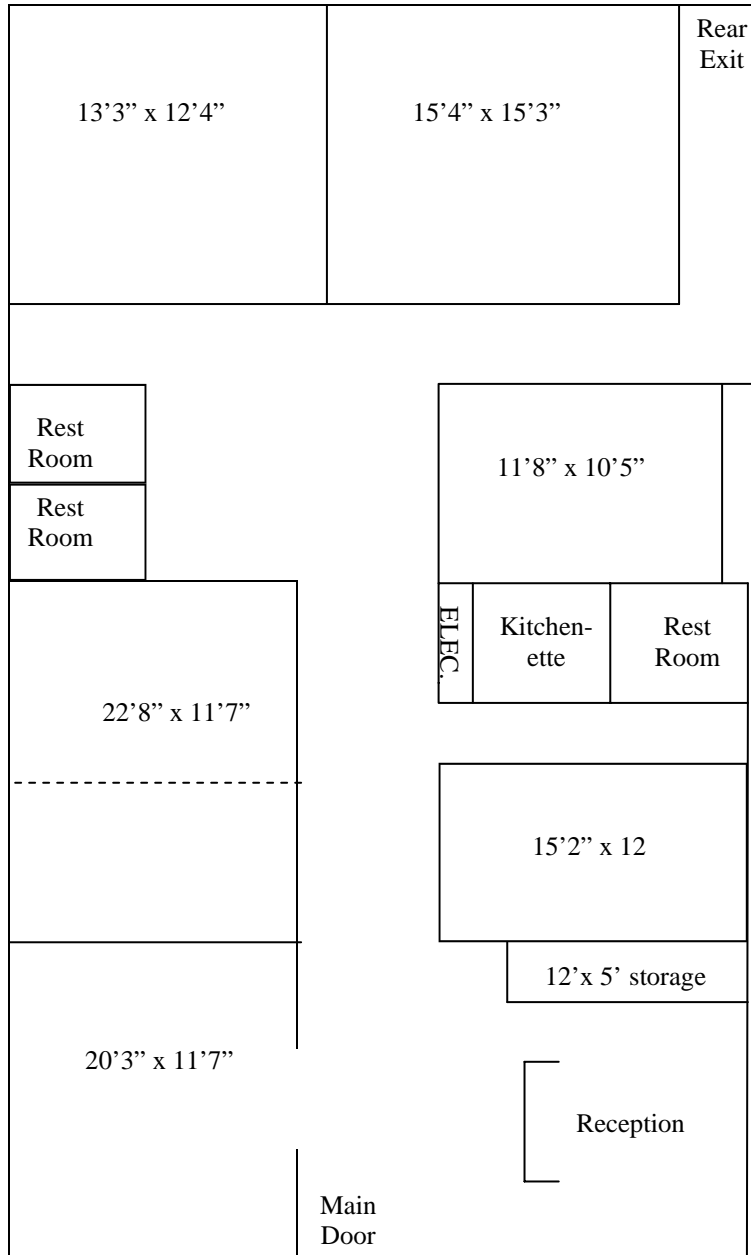
- | | |
|--|---|
| <ul style="list-style-type: none">• Unit 103• \$3,108 Monthly base rent• \$471.66 Monthly C.A.M. fees• Former Accountant offices | <ul style="list-style-type: none">• Unit 102• \$1,897 Includes C.A.M. Fees• Currently Attorneys office |
|--|---|

For More Information
Please Contact:

Harry Shasho HShasho@Shasho.com
Mary Shasho Mishasho@aol.com
Chris Shasho Cshasho@Shasho.com
(301) 632-6320 Fax (301) 632-6323

Shasho.com

Unit 103



This drawing is for layout reference only. It is not to scale.